

Stephens



CONCRETE
MFG PRODUCTS

Empire Series Batch Plants

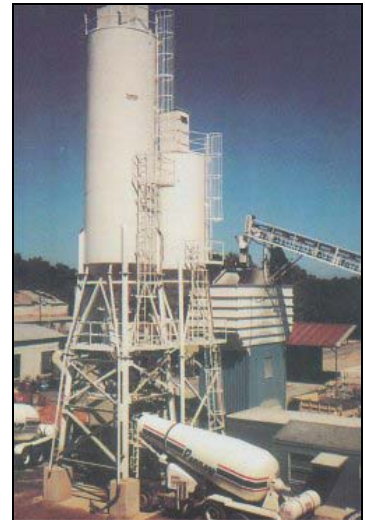
Empire Series Concrete Batch Plants are high production plants that can be easily enclosed. They are designed for the increasing demands of today's high tech concrete industry with durability to last well into the future. This plant can easily be enclosed and can produce concrete at 200 yards per hour.

High Production Multiple Compartment Stationary Batch Plant

Easy to Erect, Modular Type

Can Be Designed With Various
Manufacturer's Central Mixers, or With
Wet Batch Hopper for Easy Future
Modification for Central Mix

Proudly Made in the USA



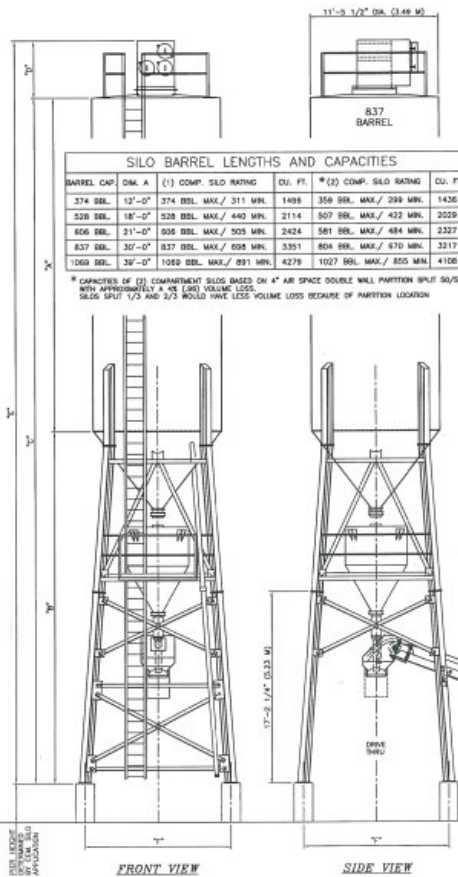
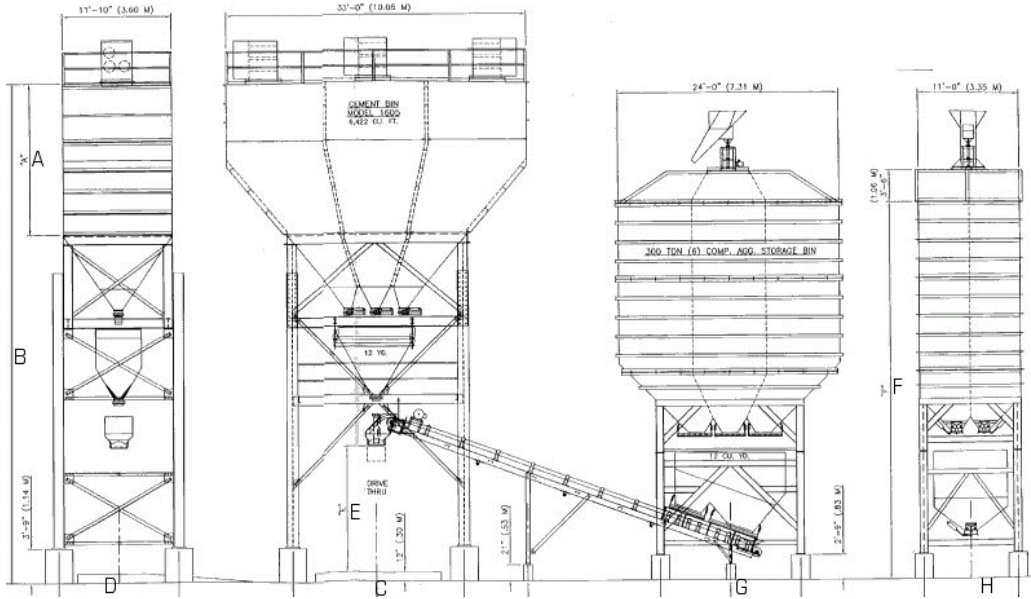
The advantage of the Empire Series is in the silo design. The Empire Series Plant has a silo from 200 tons to 375 tons with two to six compartments. This design eliminates screw conveyors, reduces the number of piers and footers required, increases yard space and increases storage. It also keeps a relatively low overall height.



George Eric Hoenig Ph 585-235-0660
Emil Garlewicz Ph 973-584-9661
Dave Knox Jr. Ph 717-569-6474
Denny Holmes Ph 410-507-2649
Wayne Hope Ph 804-379-0321
Tim Knox Ph 336-361-0393
www.concreteplants.com

MAIN OFFICE 821 West Benfield Road Severna Park, MD 21146 Phone 410.987.4542 Fax 410.987.3640

Empire Stationary Concrete Plant Typical Layout



ROUND CEMENT SILO - DIMENSIONS

Description	A	B	C	D	E	F
374 BBL Silo 42.36CM 58.59-70.3 T	12'-0" 3.65M	31'-7" 9.62M	43'-7" 13.28M	5'-1" 1.55M	48'-8" 14.83M	13'-0" 3.96M
528 BBL Silo 59.80CM 82.72-99.26 T	18'-0" 5.48M	31'-7" 9.62M	49'-7" 15.11M	5'-1" 1.55M	54'-8" 16.66M	13'-0" 3.96M
606 BBL Silo 68.64CM 94.94-113.92 T	21'-0" 6.40M	31'-7" 9.62M	52'-7" 16.02M	5'-1" 1.55M	57'-8" 17.57M	13'-0" 3.96M
837 BBL Silo 94.81CM 131.13-157.35 T	30'-0" 9.14M	*32'-0" 9.75M	*62'-0" 18.89M	5'-1" 1.55M	*67'-1" 20.44M	13'-0" 3.96M
1069 BBL Silo 212.08CM 167.47-200.97 T	39'-0" 11.88M	*32'-0" 9.75M	*71'-0" 21.63M	5'-1" 1.55M	*76'-1" 23.18M	13'-0" 3.96M

* 5" Added to these dimensions for 2 compartment silo



George Eric Hoenig Ph 585-235-0660
 Emil Garlewicz Ph 973-584-9661
 Dave Knox Jr. Ph 717-569-6474
 Denny Holmes Ph 410-507-2649
 Wayne Hope Ph 804-379-0321
 Tim Knox Ph 336-361-0393
www.concreteplants.com

EMPIRE CONCRETE BATCH PLANT EQUIPMENT - DIMENSIONS

DESCRIPTION	A	B	C	D	E	F	G	H
EAGLE 1077 SILO 122.05 CM 898 - 1,077 BBL.	8'-6 3/4" 2.60 M	46'-7 1/2" 14.21M	19'-0" 5.79M	13'-0 3/4" 3.98 M	----- -----	----- -----	----- -----	----- -----
EAGLE 1341 SILO 151.95 CM 1,118 - 1,341 BBL.	12'-6 3/4" 3.82 M	50'-7 1/2" 15.43 M	19'-0" 5.79M	13'-0 3/4" 3.98 M	----- -----	----- -----	----- -----	----- -----
EAGLE 1605 SILO 181.86 CM 1,338 - 1,605 BBL.	16'-6 3/4" 5.04 M	54'-7 1/2" 16.64 M	19'-0" 5.79M	13'-0 3/4" 3.98 M	----- -----	----- -----	----- -----	----- -----
EAGLE 2000 SILO 226.54 CM 1,666 - 2,000 BBL.	20'-6 3/4" 6.26 M	58'-7 1/2" 17.86 M	19'-0" 5.79M	13'-0 3/4" 3.98 M	----- -----	----- -----	----- -----	----- -----
Transfer Conv. (30" belt)	----- -----	----- -----	----- -----	----- -----	13'-9" 4.19M	----- -----	----- -----	----- -----
Transfer Conv. (36" belt)	----- -----	----- -----	----- -----	----- -----	13'-6" 4.11M	----- -----	----- -----	----- -----
200 TON BIN 148 CU. YD.	----- -----	----- -----	----- -----	----- -----	----- -----	32'-11" 10.03M	15'-3" 4.64M	10'-3" 3.12M
250 TON BIN 185 CU. YD.	----- -----	----- -----	----- -----	----- -----	----- -----	37'-1" 11.30M	15'-3" 4.64M	10'-3" 3.12M
300 TON BIN 222 CU. YD.	----- -----	----- -----	----- -----	----- -----	----- -----	41'-1" 12.52M	15'-3" 4.64M	10'-3" 3.12M



George Eric Hoenig Ph 585-235-0660
 Emil Garlewicz Ph 973-584-9661
 Dave Knox Jr. Ph 717-569-6474
 Denny Holmes Ph 410-507-2649
 Wayne Hope Ph 804-379-0321
 Tim Knox Ph 336-361-0393
www.concreteplants.com